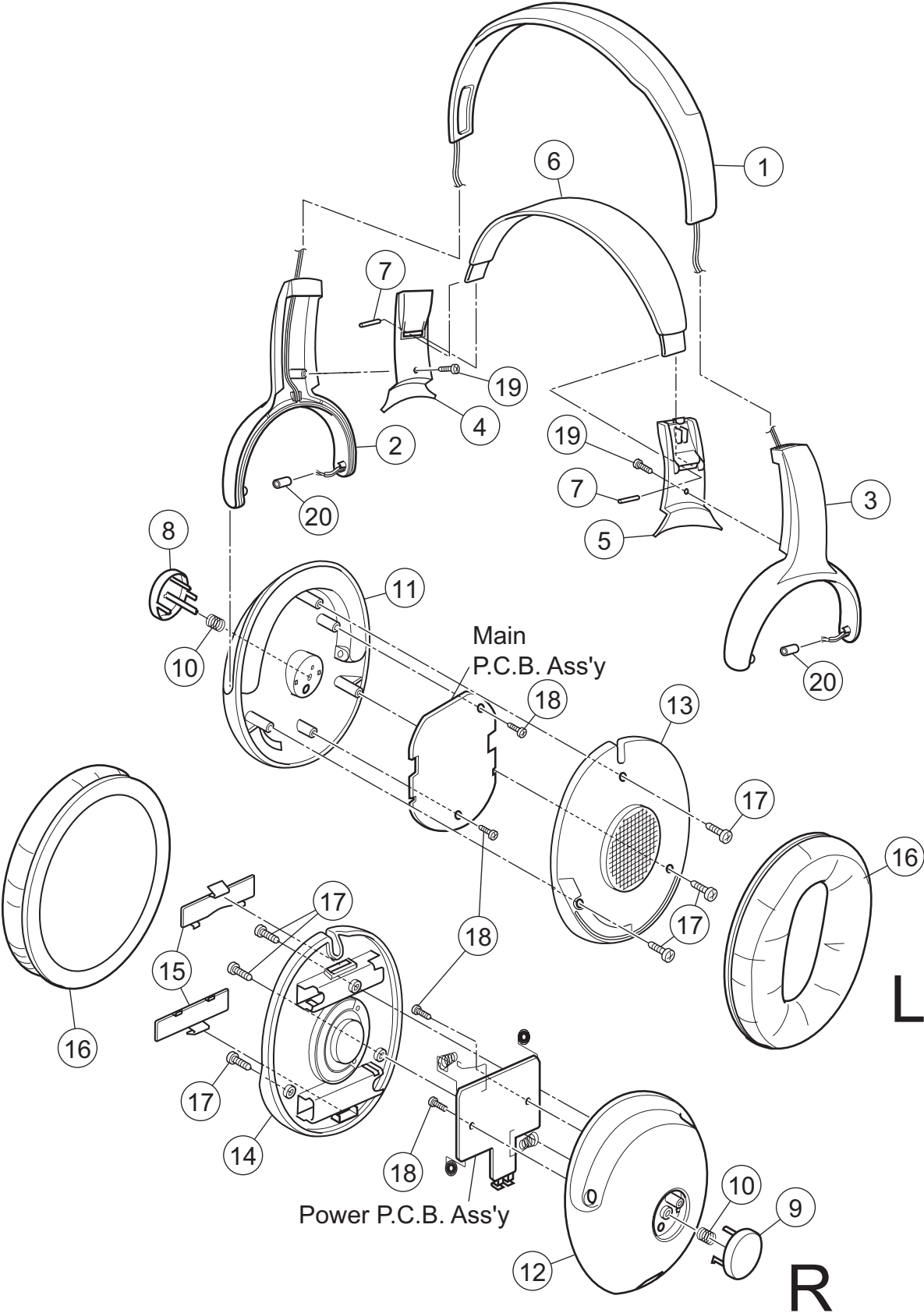


Exploded view of general assembly and parts list

Block No.M1MM



Parts List

Block No. [M][1][M][M]

△ Symbol No.	Part No.	Part Name	Description	Local
1	J34759-001	Headband Ass'y	with connecting wire	
2	J34760-001	Hanger (L)		
3	J34761-001	Hanger (R)		
4	J34762-001	Hanger Cover (L)		
5	J34763-001	Hanger Cover (R)		
6	J34764-001	Subband Assy		
7	J47977-001	End Pin	(x2)	
8	J47901-001	Auto Scan Button	for L channel	
9	J47902-001	Power Button	for R channel	
10	J47978-001	Spring	(x2)	
11	J34661-002	Housing (L)	"with "863MHz" print"	B,G
11	J34661-001	Housing (L)	"with "900MHz" print"	C,J
12	J34662-002	Housing (R)	"with "863MHz" print"	B,G
12	J34662-001	Housing (R)	"with "900MHz" print"	C,J
13	J34757-001	Driver Unit Ass'y (L)	with protector board	
14	J34758-001	Driver Unit Ass'y (R)	with protector board	
15	J34766-001	Battery Cover	(x2)	
16	J34765-001	Ear Pad	(x2)	
17	QYSPSF2008M	Screw	for Driver unit ass'y(x6)	
18	QYSPSF2006N	Screw	for P.C.B. ass'y(x4)	
19	QYSPSF2008M	Screw	for Hanger cover(x2)	
20	J47987-001	Tube	(x2)	

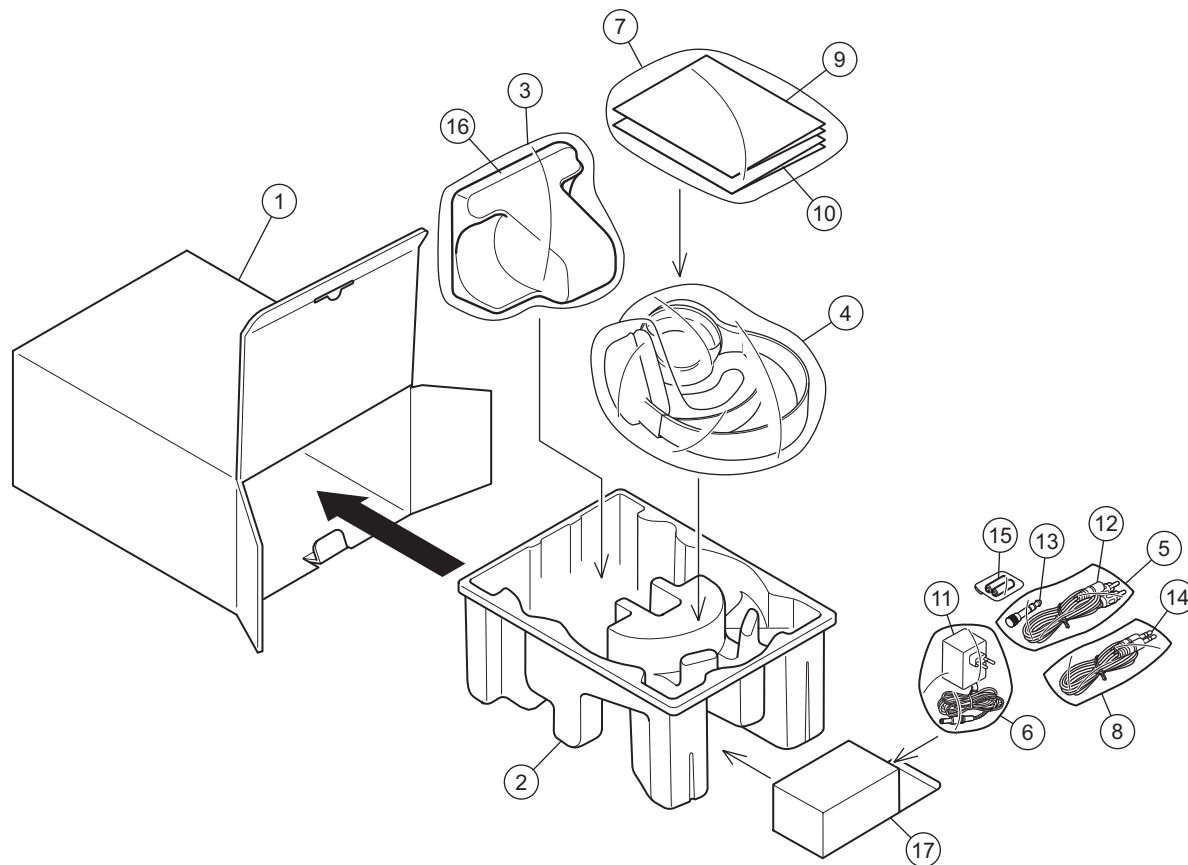
Electrical parts List

Block No. [0][1]

△ Symbol No.	Part No.	Part Name	Description	Local
△ PW1	J22309-001	Main P.C.B. Ass'y	for J/C Model Adjusted	C,J
△ PW2	J22310-001	Main P.C.B. Ass'y	for G/B Model Adjusted	B,G
△ PW3	J22311-001	Power P.C.B. Ass'y		
D3	J34767-001	LED	AUTO SCAN Indicator	
D4	J34767-001	LED	Power Indicator	
VR1	J34769-001	Variable Resistor	Volume control 50KΩ x 2	
△ SW1	J34770-001	Switch	Power Switch	
SW2	J34771-001	Tact Switch	Auto Scan Switch	
△ OT1	J34772-001	Battery contact +	(x2)	
△ OT2	J34773-001	Battery contact -	(x2)	
△ OT3	J34774-001	Charge contact	(x2)	
△ OT4	J34775-001	Charge plate	(x2)	
△ F1	J48005-001	Fuse	1A 125V	

Packing materials and accessories parts list / G/B Model

Block No.M2MM



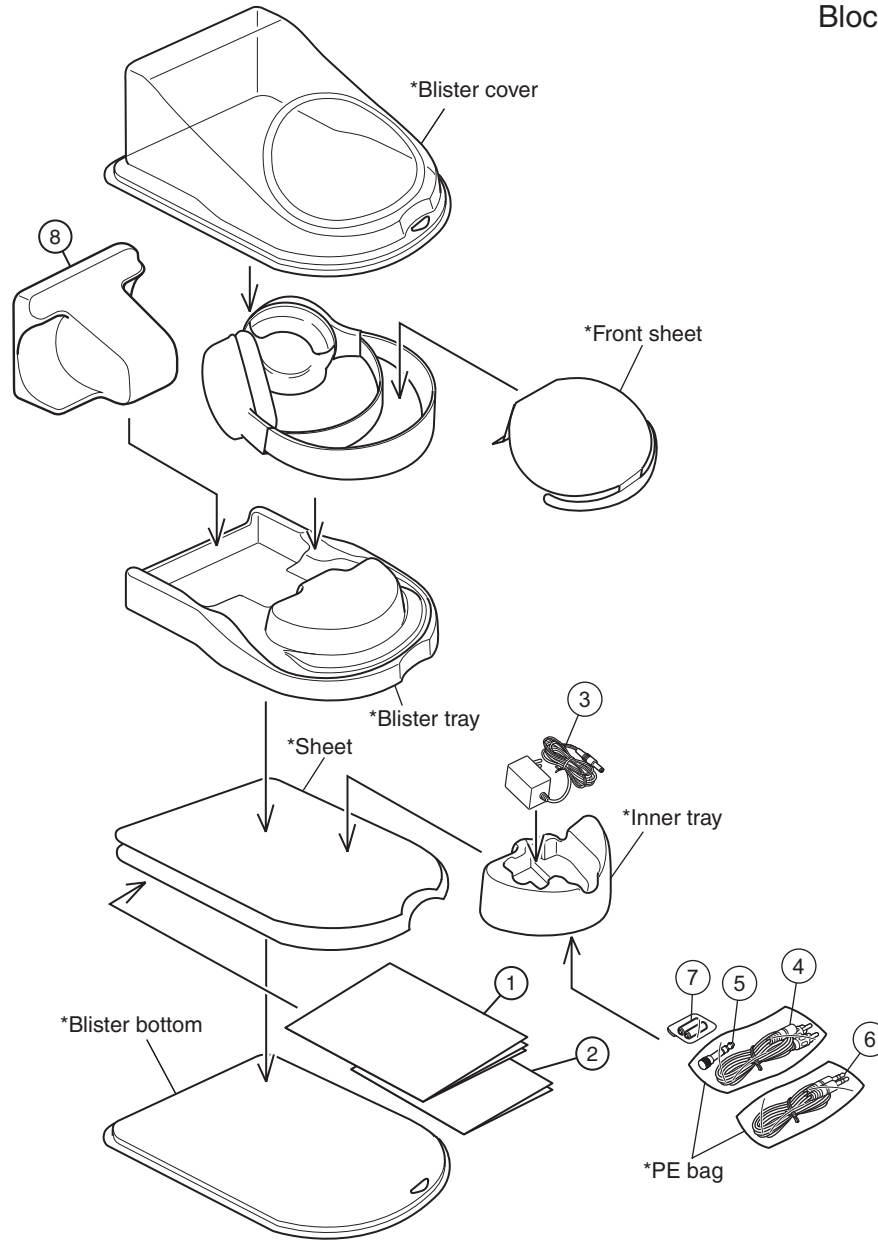
Packing and accessories

Block No. [M][2][M][M]

△ Symbol No.	Part No.	Part Name	Description	Local
1	J22317-002	Packing case		B
1	J22317-001	Packing case		G
2	J22330-001	Packing Holder		B,G
△ 3	QPC02504515P	Poly Bag	for transmitter	B,G
4	QPA01506005	Poly Bag	for receiver(headphones)	B,G
5	QPA00503005	Poly Bag	for conversion cord/plug adaptor	B,G
6	QPA01202005	Poly Bag	for AC Adaptor	B,G
△ 7	QPA01702505P	Poly Bag	for Instructions	B,G
8	QPA00503005	Poly Bag	for connection cord	B,G
9	LNT0068-001A	Instructions		B
9	LNT0067-001A	Instructions		G
10	-----	GUARANTY CARD	BT-54030-1	B,G
△ 11	J34677-001	AC Adaptor		B
△ 11	J34676-001	AC Adaptor		G
12	J34673-001	Conversion cord		B,G
13	J34672-001	Plug adaptor		B,G
14	J34674-001	Connection cord		B,G
15	J47958-001	Rechargeable batteries	2pcs in PE Bag	B,G
△ 16	J22321-001	Transmitter Unit		B,G
17	J47976-001	Accessory box		B,G

Packing materials and accessories parts list / J/C Model

Block No.M3MM



Note:

These parts which was marked *(Blister cover/Blister tray/Blister bottom/Front sheet/Inner tray/ sheet/PE bag)will not be able to supply as our service parts.

Because the blister cover and the blister bottom together of this package are adhesive by welder.

Packing and accessories

Block No. [M][3][M][M]

△ Symbol No.	Part No.	Part Name	Description	Local
1	LNT0066-001A	Instructions		C,J
2	-----	Warranty card	BT-52006-2	C
2	-----	Warranty card	BT-51007-7	J
3	J34675-001	AC Adaptor		C,J
4	J34673-001	Conversion cord		C,J
5	J34672-001	Plug adaptor		C,J
6	J34674-001	Connection cord		C,J
7	J47958-001	Rechargeable Batteries	2pcs in PE Bag	C,J
△ 8	J22320-001	Transmitter Unit		C,J